

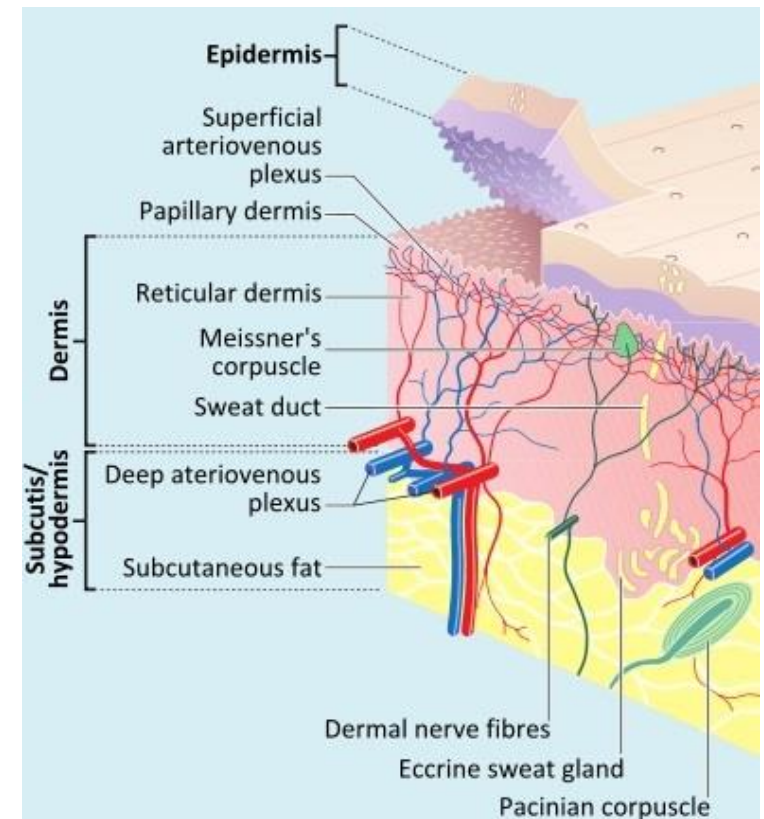
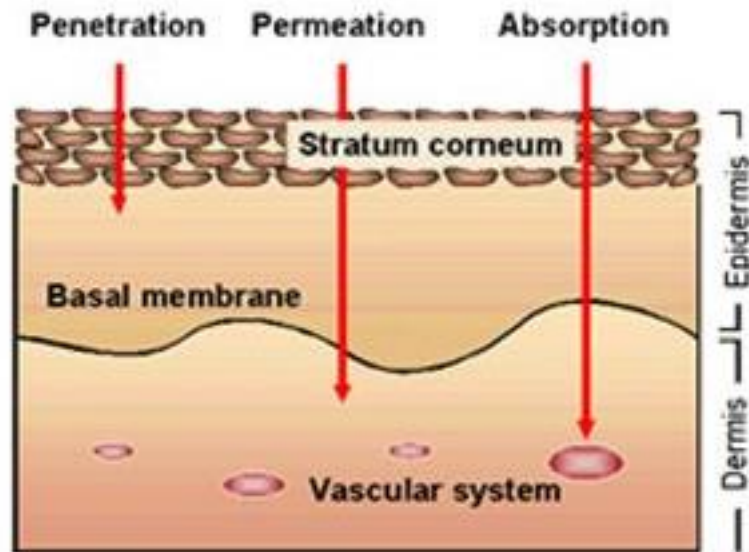
COMPOUNDING UNIQUE DOSAGE FORMS TRANSDERMAL PREPARATIONS

BRYAN ZIEGLER, PHARMD, MBA
MOSS COMPOUNDING PHARMACY
MAY 25, 2021



KEY DEFINITIONS

- Topical vs Transdermal
- Permeation enhancer



IT'S ALL ABOUT THAT BASE....



VS



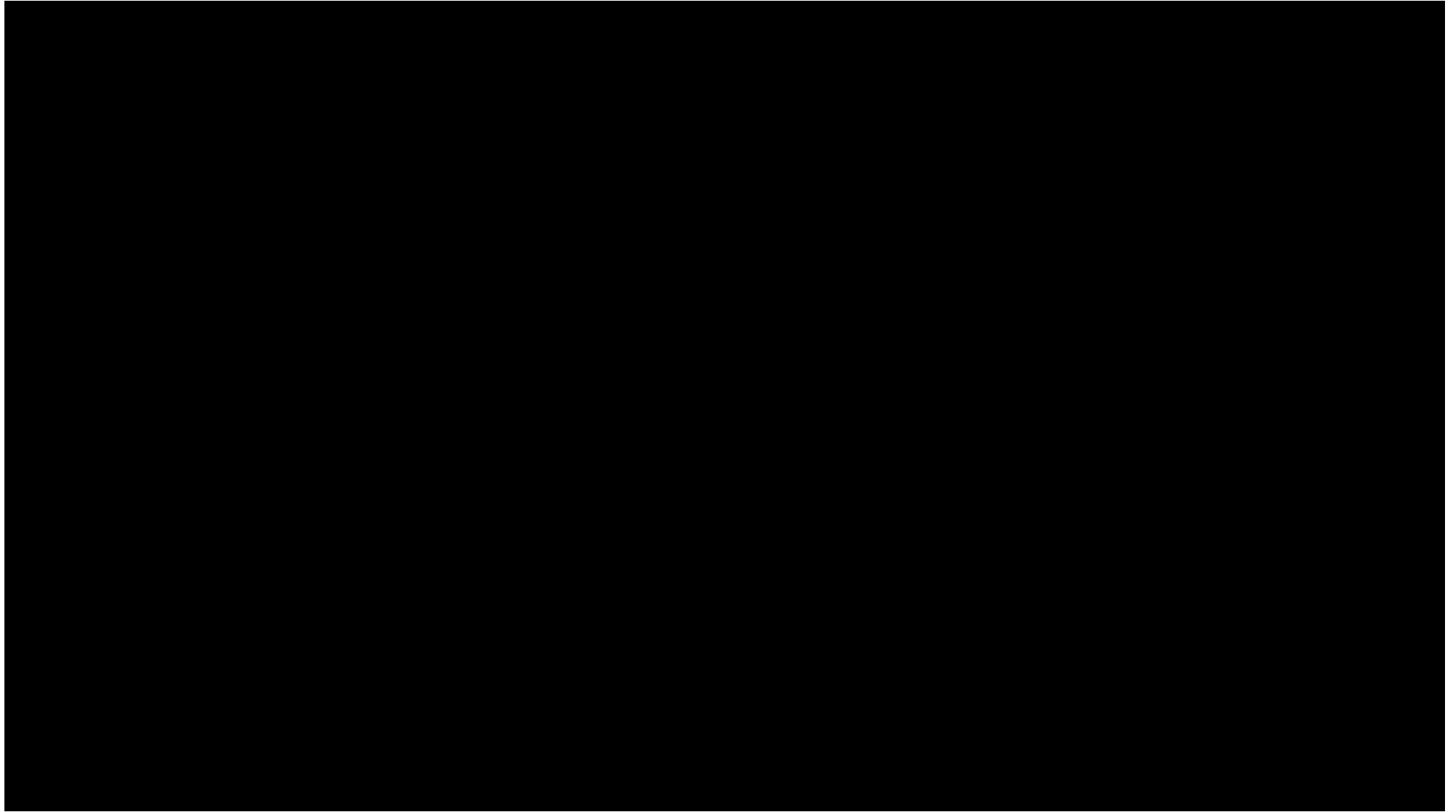
KEY CONSIDERATIONS

- Cream/Emulsion Stability
- Maximum API
- Storage
- Application site
- Patient administration and accurate dosing
- Allergies/Skin Sensitivity
- API Particle Size



COMPOUND PACKAGING





COMMON USES

- Pain management
- Neuropathy
- Dental/ENT
- Podiatry
- Nausea/Vomiting
- Hospice/Palliative Care
- Urology
- Vaginal



COMMON USES - VETERINARY



NEW!
Topi-CLICK
MICRO[®]

Accurate & easy topical
micro-dosing applicators
for humans and pets

0.05 mL
Per
CLICK

Accurate
Easy
**Pet
Owner
Approved**
MICRO

Choose Topi-CLICK Micro[®] for
The Best User Experience[™]

The advertisement features a central image of a person in a light blue lab coat and blue gloves using a white Topi-CLICK Micro applicator to administer medication into the ear of an orange and white cat. The background is a clean, light grey. Text is overlaid on the image in various colors and fonts. A green banner at the bottom contains the slogan. A circular logo with a leaf is visible on the left side of the overall slide.



COMMON INGREDIENTS – PAIN/NEUROPATHY

Other Typical Ingredients and Strengths for Transdermal Pain Compounds

- Amitriptyline 2% (Range: 1-2%)
- Baclofen 2% (Range 1-2%)
- Bupivacaine 1%
- Clonidine 0.2%
- Cyclobenzaprine 1%
- Diclofenac 5% (Range 2-10%) - TID dosing
- Gabapentin 5% (Range 2.5 – 10%)
- Ibuprofen 20% (Range 10-20%) - Q4-6hr
- Ibuprofen 20% (Range 10-20%) - Q4-6hr dosing
- Ketamine 2%
- Ketoprofen 10% (Range 10-20%) – TID dosing
- Lidocaine 2% (Range 1-5%)
- Meloxicam
- Piroxicam 2% (Range 1-2%) *
- Tetracaine 1%

*Note – Long acting effect, dosing would be reduced to QD if added with shorter acting NSAID (ie. Ibuprofen 20%)



COMPOUND MEDICATION GUIDES

Commonly used preparations

Name	Active Ingredient(s) & Strength	Dosing Recommendations	Notes
Gabapentin 5%/ Lidocaine 2.5% Gel	gabapentin (5%), lidocaine (2.5%)	Apply BID – QID PRN	Shingles Pain Price = \$45/30gm
GAL Gel	gabapentin (5%), amitriptyline (2%), lidocaine (2%)	Apply BID – QID, then PRN	Neuropathy or Shingles Pain Price = \$49/30gm
ABIL Gel	amitriptyline (2%), baclofen (2%), ibuprofen (20%), lidocaine (2%)	Apply BID-QID	Neuropathy
KGAL Gel	ketoprofen (10%), gabapentin (5%), amitriptyline (2%) lidocaine (2%),	Apply TID, then PRN	Neuropathy + Osteoarthritis
Goose Grease	gabapentin 5%, ketoprofen 10%, lidocaine 5%, +/- ketamine 2%	Apply TID, then PRN	Advanced Neuropathy/ Osteoarthritis Price = \$60/30gm
Ketoprofen 10% Gel	Ketoprofen 10%	Apply TID	Anti-inflammatory
Diclofenac 5%/ Baclofen 2%/ Bupivacaine 1% Gel	Diclofenac (5%), baclofen 2%, bupivacaine 1%	Apply BID – TID, then PRN	Osteoarthritis Price = \$51/30gm
Naltrexone	Capsules: Various low dose strengths (1 – 6mg)	1 QD	Fibromyalgia MS, Chronic Inflammatory, etc.

Compound Medication Guides can be found at mosscompounding.com Prescriber Learning Center





Content Menu

- Newsletters/Info Sheets
- Compound Medication Guides (Common Formulas)
- Tips for E-Prescribing Compounded Medications
- CBD Oil Information



COMMON INGREDIENTS – NAUSEA/VOMITING

- Promethazine
- Ondansetron
- Meclizine
- Prochlorperazine



Popular Formulation - **Promethazine 12.5mg/0.1 mL Transdermal Gel**
SIG: Apply 0.1 mL – 0.2 mL to wrist Q4-6hr PRN N/V. Rub in with other wrist



Sample Formulation

Lorazepam 1mg/ Diphenhydramine 25mg/

Haloperidol 1mg per mL

SIG: Apply 0.5-1mL to wrist and/or neck Q8-12 hours prn



**COMMON INGREDIENTS –
HOSPICE/PALLIATIVE CARE**

Lorazepam

Diphenhydramine

Haloperidol

Metoclopramide

COMMON INGREDIENTS - PODIATRY

- Poor Circulation/Reynaud's
 - Nifedipine
 - Pentoxifylline
- Heel Spurs
 - Diclofenac/Baclofen/Bupivacaine
 - Ibuprofen
- Plantar Fasciitis
 - Ketoprofen/Cyclobenzaprine
- Cramps
 - Guaifenesin
 - Ketoprofen/Cyclobenzaprine



COMMON INGREDIENTS - UROLOGY

- Verapamil



COMMON INGREDIENTS – WOMEN’S HEALTH

- Papaverine
- Arginine
- Gabapentin
- Lidocaine
- Naltrexone

Sexual Dysfunction - Female

Name	Active Ingredient(s) & Strength	Dosing Recommendations	Notes
Passion Potion Gel	Arginine 6%/ Peppermint Oil	Apply to clitoris and external labia 15 – 60 minutes prior to sexual activity	Qty: 15gm Avail OTC \$30/15gm
Dream Gel	arginine 6%, papaverine 2%	Apply to clitoris and external labia 15 – 60 minutes prior to sexual activity	Qty: 15gm Also avail in cream \$35/15gm
Scream Gel	arginine 6%, papaverine 2% Peppermint Oil	Apply to clitoris and external labia 15 – 60 minutes prior to sexual activity	Qty: 15gm Also avail in cream \$35/15gm
Yell Gel	arginine 2%/ naltrexone 0.7%/ Peppermint Oil	Apply to clitoris and external labia 15 – 60 minutes prior to sexual activity	Qty: 15gm \$50/15gm
Yell Gel + Sildenafil 1%	arginine 2%/ naltrexone 0.7%/ Peppermint Oil Sildenafil 1%	Apply to clitoris and external labia 15 – 60 minutes prior to sexual activity	Qty: 15gm \$60/15gm
Sildenafil 1%/Arginine 11.7% cream	Sildenafil 1%, arginine 11.7%	Apply to clitoris and external labia 15 – 60 minutes prior to sexual activity	Qty 15gm \$40/15gm

**See flyer for more info on female libido gels.*



Sample Formulation

Ketoprofen 10%/Cyclobenzaprine 2% Transdermal Gel

(aka - TMJ Gel)

SIG: Apply BID-TID PRN TMJ



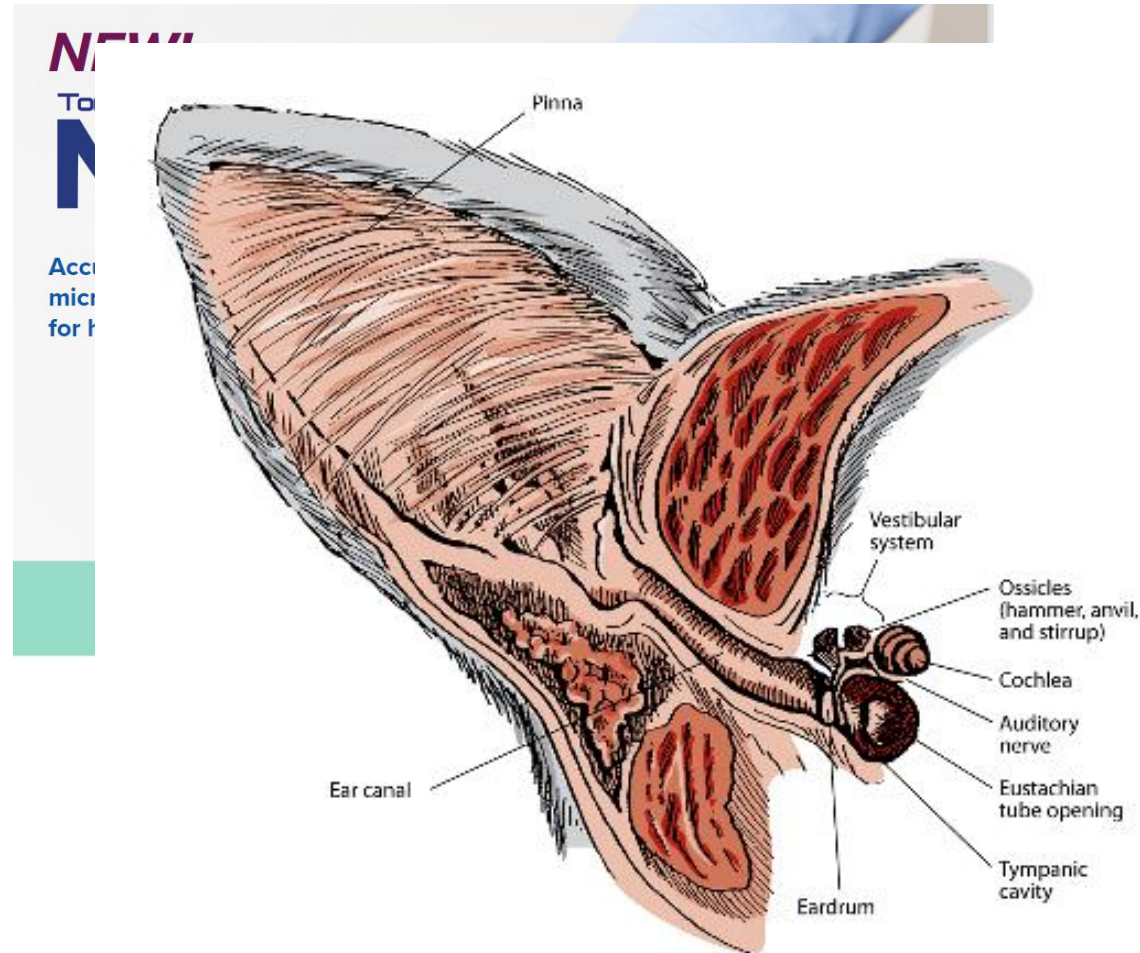
**COMMON INGREDIENTS -
DENTAL**

Ketoprofen

Cyclobenzaprine

COMMON INGREDIENTS - VETERINARY

- Methimazole
- Amitriptyline
- Theophylline
- Gabapentin
- Mirtazapine
- Diazepam
- Lorazepam



Source: <https://www.merckvetmanual.com/cat-owners/ear-disorders-of-cats/ear-structure-and-function-in-cats>



QUESTIONS?

Bryan Ziegler, PharmD, MBA

843.665.0289

bziegler@mosscompounding.com

Michelle Lee

mlee@mosscompounding.com





MOSS

**COMPOUNDING
PHARMACY**